



BETTER ROADS AND HIGHWAYS

BEGIN WITH  
**OPENROADS™**  
**DESIGNER**

Bentley®



# WELCOME TO THE **OPENROADS DESIGNER** **PRODUCT TOUR GUIDE**

This e-book provides a look at how OpenRoads Designer software supports the evolving BIM requirements and helps you connect the **data, people, workflows, and ideas** necessary to support today's infrastructure projects.



The e-book also includes links to more than **20 VIDEOS** that illustrate how the software addresses your critical business issues, such as collaborating across disciplines, ensuring engineered design intent, and improving the deliverables required for each project.

If you have questions, or need more information, please visit [www.bentley.com/OpenRoads](http://www.bentley.com/OpenRoads) or call **1 800 236 8539**.

# SOLVE YOUR **CRITICAL BUSINESS ISSUES**

**OpenRoads Designer CONNECT Edition** was built with your critical business issues in mind. It's a single application that includes a broad set of capabilities to meet your design and engineering requirements.

With workflows and toolsets, you can rapidly model design intent, edit dynamically, ensure standards, work in all disciplines, and continuously model as you design your project. Work in one composite model to provide a wide range of project deliverables.

**EXPLORE MORE >**



**REALITY CONTEXT**



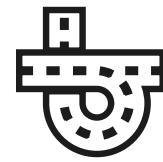
**DESIGN INTENT**



**MULTIPLE DISCIPLINES**



**ADAPT TO CHANGE**



# WITH **OPENROADS DESIGNER** CONNECT EDITION, YOU CAN:



**Incorporate** real-world conditions into your virtual design environment for better decision making.



**Create** intelligent models with relationships and associations between civil elements to ensure design intent.



**Integrate** design data from multiple disciplines to improve collaboration, accuracy, and efficiency.



**Utilize** a federated model to dynamically update edits throughout the project workflow to easily adapt to change.



**Produce** project deliverables, such as machine control guidance, models, and other data needed for today's requirements.



**HEAR MORE**



# DESIGN IN **REALITY** CONTEXT

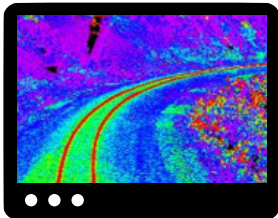
OpenRoads Designer helps you effectively understand existing conditions. You can incorporate, analyze, and manipulate a wide range of data such as **point clouds, reality meshes, photogrammetry, terrain, and more**. Quickly produce 3D models using “field collected” project information to enhance design decisions.

Your model will help you to better understand site and existing conditions throughout the planning, design, construction, and operation of your infrastructure asset.

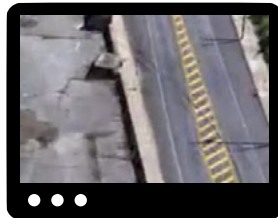


[HEAR MORE](#)

**LEARN MORE BY WATCHING THE VIDEOS BELOW >**



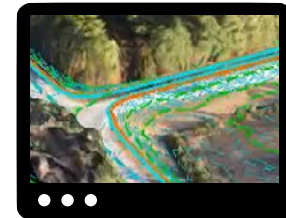
**POINT CLOUDS**



**REALITY MESHES**



**RASTER IMAGERY**



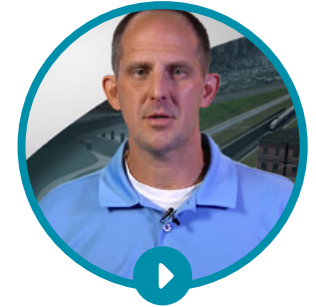
**TERRAIN MODELS**



# MODEL YOUR **DESIGN INTENT**

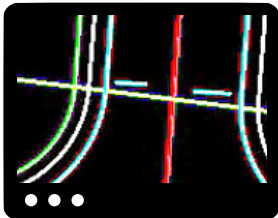
Model with design intent as OpenRoads Designer offers new and innovative technology that **captures, stores, and maintains how each design element is created**. As a result, design associations and relationships between civil elements ensure the design always reflects engineering intent.

The application allows you to design while you model using innovative technology such as civil cells, interactive modeling, dynamic relationships, and relational intelligence.

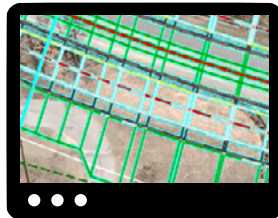


[HEAR MORE](#)

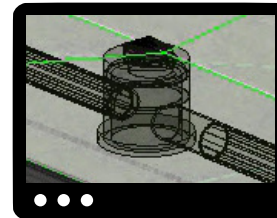
**LEARN MORE BY WATCHING THE VIDEOS BELOW >**



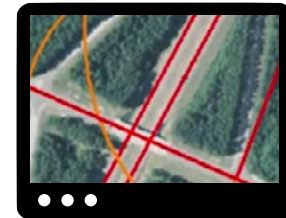
**CIVIL CELLS**



**ALIGNMENTS**



**DRAINAGE**



**CORRIDORS**





# INTEGRATE **MULTIPLE DISCIPLINES**

OpenRoads Designer allows you to see and use everyone else's data within the confines of your own application.

**This true integration helps you analyze, model, and report on all the data within a singular model.**

Regardless of whether you're modeling roads, roundabouts, bridges, or ponds, use the same technology to create an integrated project model. Combine 3D project data from any source to make better engineering decisions and reduce risk by minimizing errors and omissions prior to construction.

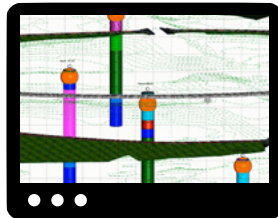


**HEAR MORE**

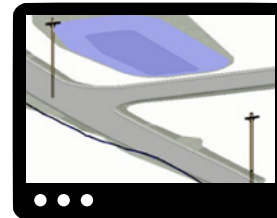
**LEARN MORE BY WATCHING THE VIDEOS BELOW >**



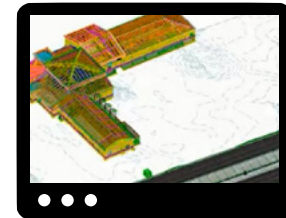
**BRIDGES**



**GEOTECHNICAL**



**UTILITIES**



**BUILDINGS**



# ADAPT TO **CHANGE**

Change is a constant in the design and production world. That's why OpenRoads Designer was built to **help you manage all your design changes**.

When you make modifications in the design, all edits are dynamically updated throughout the model. Plus you can create a dynamic and interactive design model that is consistent throughout the project and workflows, thereby maximizing its value.



[HEAR MORE](#)

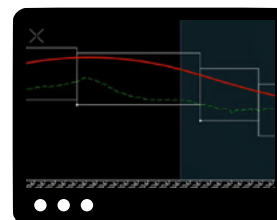
**LEARN MORE BY WATCHING THE VIDEOS BELOW >**



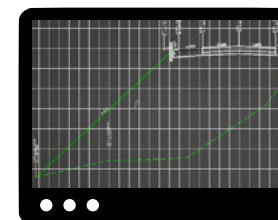
**ALIGNMENT**



**SAFETY MEASURES**



**DESIGN CHANGES**



**CONSTRUCTION  
DOCUMENTS**





# IMPROVE **PROJECT DELIVERABLES**

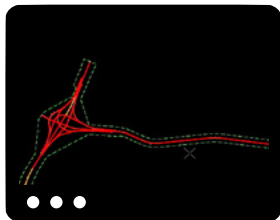
Construction drawings are no longer the only expected deliverable. Engineers and designers are now required to provide additional data such as automated machine control guidance, 3D models, and other digital information. OpenRoads Designer improves project deliverables by **broadening the construction documentation and data that you can produce to meet project requirements.**

Using design constraints, design-time visualization, dynamic annotation, and automated plan production based on the live model, you are assured that all project information is consistent and up to date.

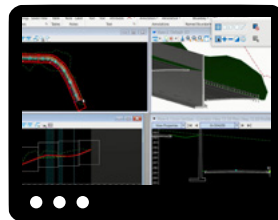


[HEAR MORE](#)

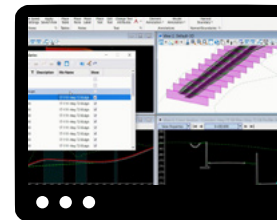
**LEARN MORE BY WATCHING THE VIDEOS BELOW >**



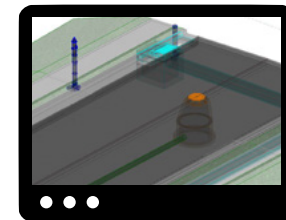
**ENGINEERING MODEL**



**PLANS AND PROFILES**



**CROSS SECTIONS**



**BIM**

# OPENROADS DESIGNER

OpenRoads Designer was built to solve your critical business issues so you can meet the requirements needed for your civil engineering projects.

This single application supports all aspects of a detailed roadway design including survey, geotechnical, drainage, subsurface utilities, earthwork, plan production, and more.

**Get started with OpenRoads Designer today.**

**TELL ME MORE >**

1-800-BENTLEY (1 800 236 8539)

© 2019 Bentley Systems, Incorporated. Bentley, the Bentley logo, OpenRoads, and OpenRoads Designer are either registered or unregistered trademarks or service marks of Bentley Systems, Incorporated or one of its direct or indirect wholly owned subsidiaries. Other brands and product names are trademarks of their respective owners. 04/19

